

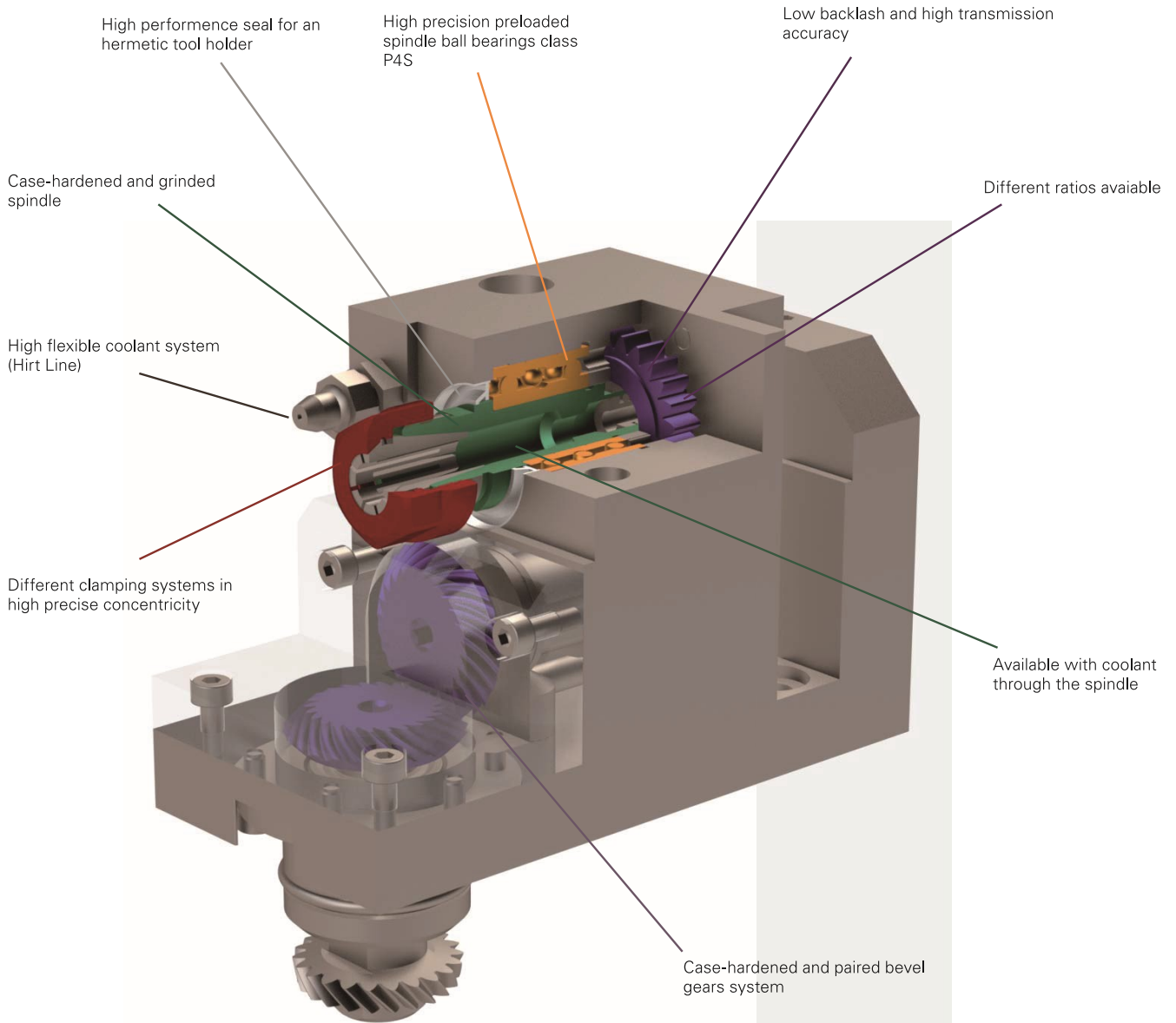


# PCM<sup>®</sup>

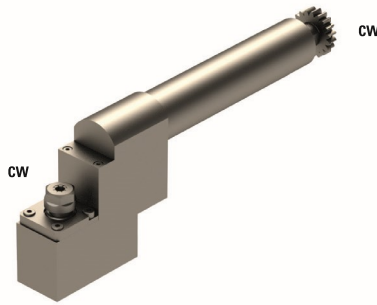
SWISS



PRECISION TOOLING



### GSE-306-L-520



	ER11
	1:1
<b>RPM max.</b>	6'000

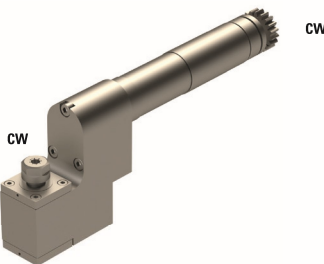
<b>Machines Types</b>	M220-V
	M232-III
	L20V M232-V
	L20VII M320-III
	L20VIII M320-V
	L20X M332-III
	M220-III M332-V
M32-4M5	
M32-4M8	

**Note :**



Position T08-T10

### GSE-306-SE312



	ER11
	1:3
<b>RPM max.</b>	18'000

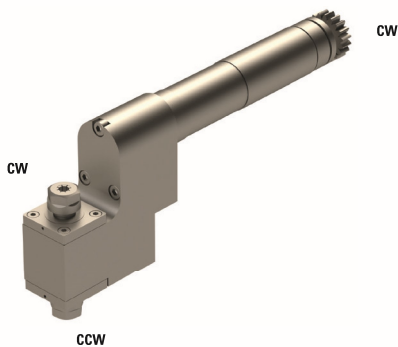
<b>Machines Types</b>	L20E-2M8 M220-V
	L20E-2M10 M232-III
	L20E-2M12 M232-V
	L20E-IX M320-III
	L20V M320-V
	L20VII M332-III
	L20VIII M332-V
	L20X M32-4M5
M220-III M32-4M8	

**Note :**



Position T08-T10

### GSE-306-DE312



	2xER11
	1:3
<b>RPM max.</b>	18'000

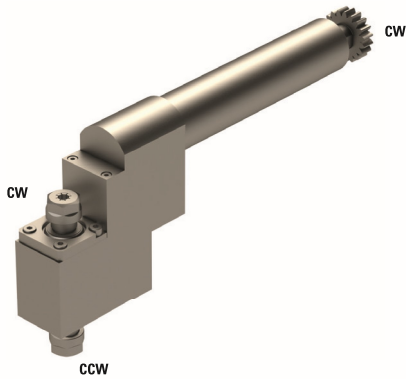
<b>Machines Types</b>	L20E2M8 M220-V
	L20E2M10 M232-III
	L20E-1M12 M232-V
	L20E-IX M320-III
	L20V M320-V
	L20VII M332-III
	L20VIII M332-V
	L20X M32-4M5
M220-III M32-4M8	


**Note :**



Position T08-T10

### GSE-306-DE011



	2xER11
---	--------

	1:1
---	-----

<b>RPM max.</b>	6'000
-----------------	-------

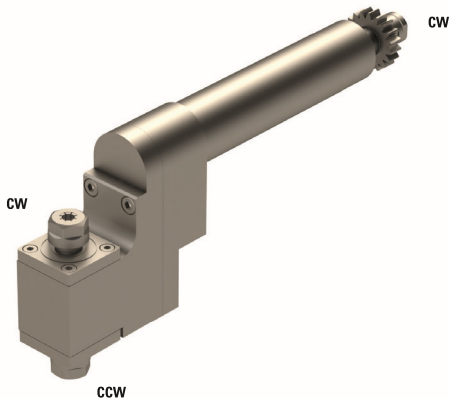
<b>Machines Types</b>	L20E2M8	M220-V
	L20E2M10	M232-III
	L20E-1M12	M232-V
	L20E-IX	M320-III
	L20V	M320-V
	L20VII	M332-III
	L20VIII	M332-V
	L20X	M32-4M5
M220-III	M32-4M8	


**Note :**



Position T08-T10

### GSE-306-DE511



	2xER11
---	--------

	1:1
---	-----

<b>RPM max.</b>	6'000
-----------------	-------

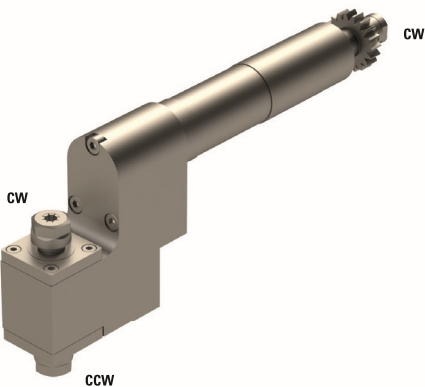
<b>Machines Types</b>	L25-VII
-----------------------	---------


**Note :**

Position T08-T10



### GSE-306-DE512



	2xER11
---	--------

	1:3
---	-----

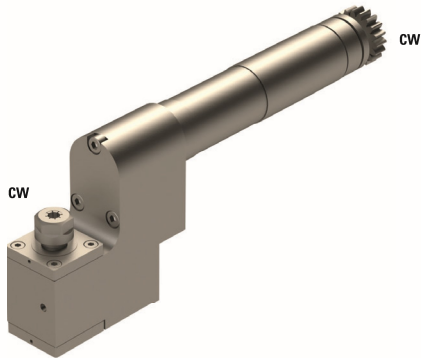
<b>RPM max.</b>	18'000
-----------------	--------

<b>Machines Types</b>	L25-VII
-----------------------	---------

**Note :**

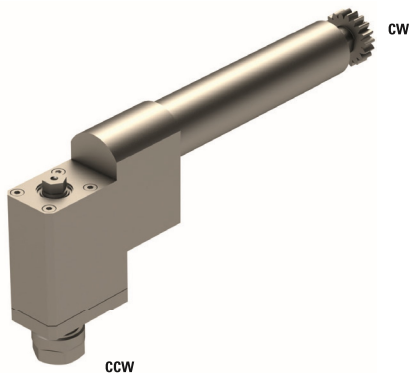
Position T08-T10





**GSE-306-SE512**


	ER11
	1:3
<b>RPM max.</b>	18'000
<b>Machines Types</b>	L25-VII
<b>Note :</b>	

Position T08-T10

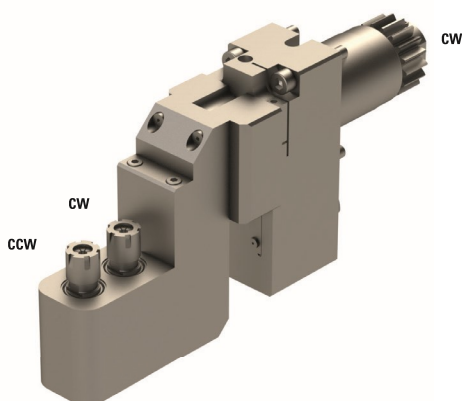

**GSE-316-GS**


	ER16
	1:1
<b>RPM max.</b>	6'000

**Machines Types**

 L20E2M8  
 L20E2M10  
 L20E-1M12  
 L20E-IX  
 L20V  
 L20VII  
 L20VIII  
 L20X  
 M32-3M5  
 M32-3M3  
 M32-4M5  
 M32-4M8

**Note :** Position T08-T10

**CITIZEN6-GSE-208**


	2xER08
	1:1
<b>RPM max.</b>	6'000

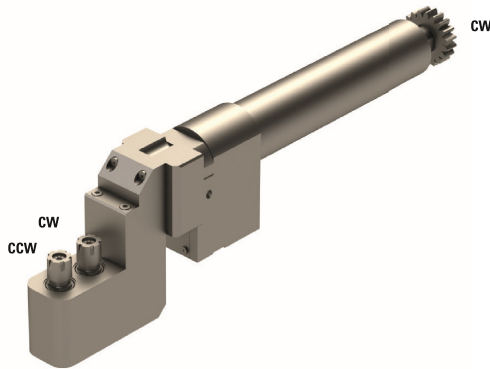
**Machines Types**


 A232-VII  
 A32-VII  
 A320-VII  
 L20E-2M8  
 L20E-2M10  
 L20E-2M12  
 L20E-IX  
 L32-1M8  
 L32-1M10  
 L32-1M12

**Note :** Head GSE-208

 Position T08-T10 / Adjustable  $\pm 15^\circ$  / Base CITIZEN6-PCR


### CITIZEN7-GSE-208



	2xER08
---	--------

	1:1
---	-----

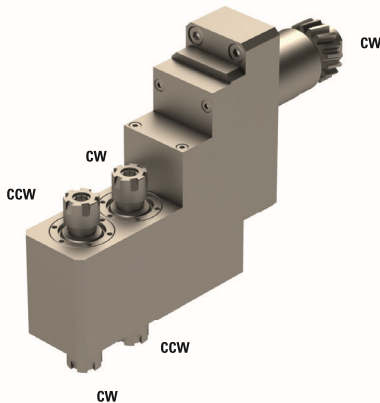
RPM max.	6'000
----------	-------


<b>Machines Types</b>	L20V
	L20VII
	L20VIII
	L20X

**Note :**

 Position T08-T10 / Adjustable  $\pm 15^\circ$  / Base CITIZEN6-PCR Head GSE-208


### GSE-3107



	2xER11+2xER11
---	---------------

	1:1
---	-----

RPM max.	6'000
----------	-------

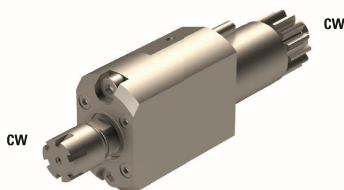
<b>Machines Types</b>	L20E2M8
	L20E2M10
	L20E-1M12
	L20E-IX
	L20V
	L20VII
L20VIII	
L20X	


**Note :**

Position T13-T16 or GSE3210



### GSE3407-HP



	ER11
---	------

	1:1
---	-----

RPM max.	3'900
----------	-------

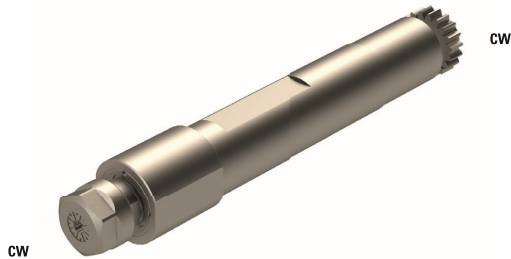
<b>Machines Types</b>	L20E2M8
	L20E2M10
	L20E-1M12
	L20E-IX


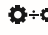
**Note :**

Position T21-T23



### GSC-1010

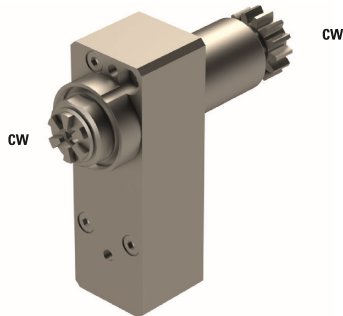


	ER16
	1:1
<b>RPM max.</b>	6'000
<b>Machines Types</b>	M220-V
	M232-III
	L20V
	M232-V
	L20VII
	M320-III
	L20VIII
M320-V	
L20X	
M332-III	
M220-III	
M332-V	
M32-4M5	
M32-4M8	

**Note :**  
Position T08-T10



### GSE-3307

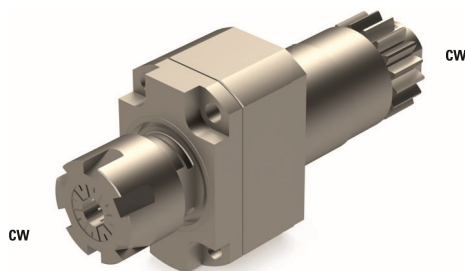



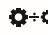
	ER11
	1:3
<b>RPM max.</b>	24'000
<b>Machines Types</b>	A20-VII
	A20-3F7N

**Note :**  
Position T31-34



### GSC-1113

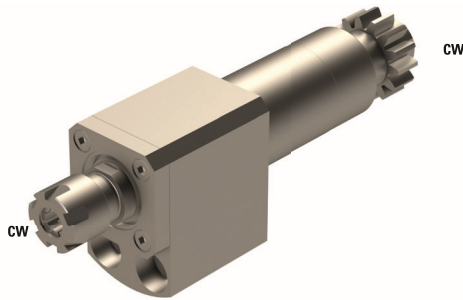




	ER20
	1:1
<b>RPM max.</b>	6'000
<b>Machines Types</b>	A232-VII
	A32-VII
	A320-VII
	L20E2M8
	L20E2M10
	L20E-1M12
	L20E-IX
	L20V
	L20VII
	L20VIII
	L20X
	L32-1M8
	L32-1M10
	L32-1M12

**Note :** Position T08-T10



## GSC-907

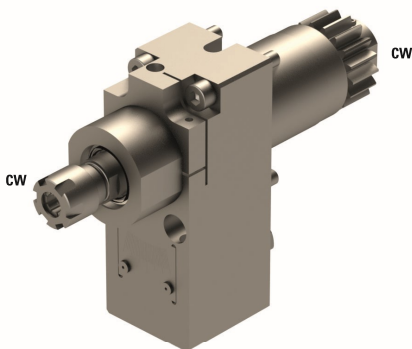




	ER11
	1:1
<b>RPM max.</b>	6'000
<b>Machines Types</b>	L20E2M8 L20E2M10 L20E-1M12 L20E-IX L20V L20VII L20VIII L20X M32-3M5 M32-3M3 M32-4M5 M32-4M8



**Note :** Position T08-T10

## CITIZEN6-GSC-007

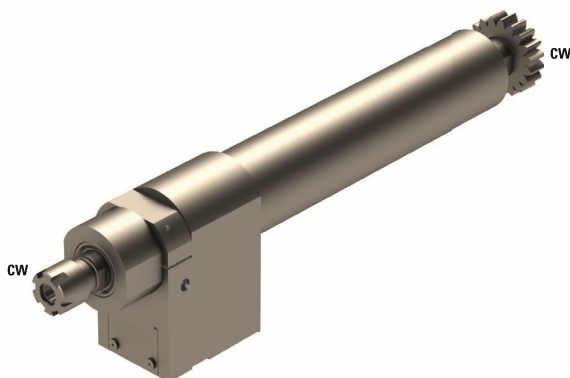




	ER08
	1:1
<b>RPM max.</b>	6'000
<b>Machines Types</b>	A232-VII A32-VII A320-VII L20E-2M8 L20E-2M10 L20E-2M12 L20E-IX L32-1M8 L32-1M10 L32-1M12



**Note :** Position T08-T10 / Basis CITIZEN6-PCR / Head GSC-007

## CITIZEN7-GSC-007



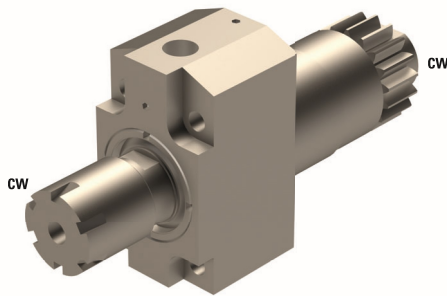
	ER08
	1:1
<b>RPM max.</b>	6'000
<b>Machines Types</b>	L20V L20VII L20VIII L20X



**Note :**

Position T08-T10  
Basis CITIZEN7-PCR  
Head GSC-007



### GSC1310-HP

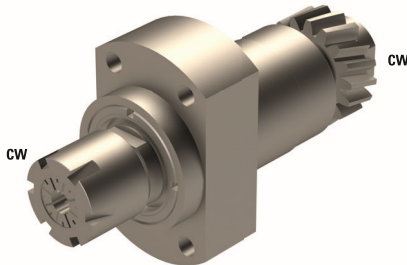




	ER16
	1:1
<b>RPM max.</b>	8'000
<b>Machines Types</b>	A20-3F7N M220-III
	A232-VII M220-V
	A32-VII M232-III
	A320-VII M232-V
	L20E-2M8 M320-III
	L20E-2M10 M320-V
	L20E-2M12 M332-III
	L32-1M8 M332-V
L32-1M10 M32-4M5	
L32-1M12 M32-4M8	

**Note :** Position T06-T08 according to the machine

Maximum pressure 137 Bar

### GSC-1210

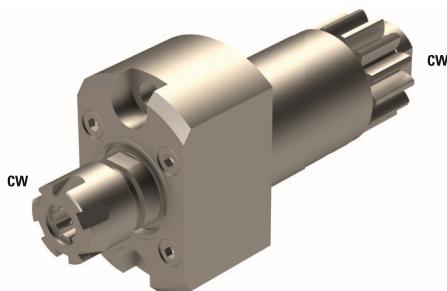




	ER16
	1:1
<b>RPM max.</b>	6'000
<b>Machines Types</b>	L20E2M8
	L20E2M10
	L20E-1M12
	L20E-IX

**Note :**

Position T08-T10

### MSC-507-II

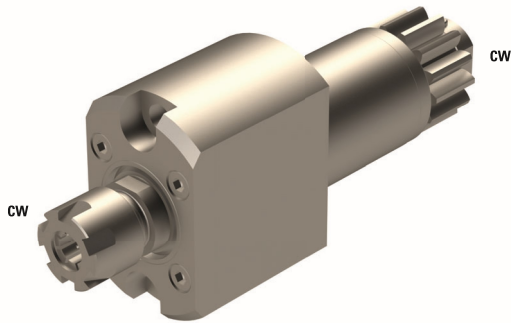


	ER11
	1:1
<b>RPM max.</b>	8'000
<b>Machines Types</b>	A20-VII M320-V
	A20-3F7N M332-III
	A320-VII M332-V
	L12-1M7 M32-4M5
	L20E-2M12 M32-4M8
	L20E-2M10 M212-C
	L20E-2M8 M212-V
	L20E-IX M216-C
	L20X M216-V
	L32-1M12 M312-III
	L32-1M10 M312-V
	L32-1M8 M312-VII
	M220-III M316-III
	M220-V M316-V
	M232-III M16-4M5
	M232-V M16-4M8
	M320-III

**Note :** Position T06-T10 or T31-T34 or T21-T23 according to the machine



## MSC-507-L



ER11



1:1

RPM max.

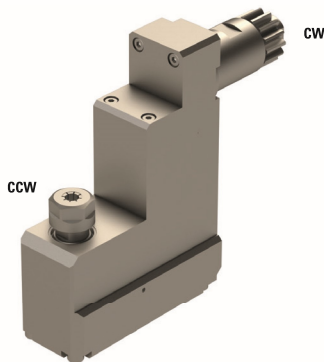
10'000

### Machines Types

A20-3F7N	M212-V
A320-VII	M216-C
L12-1M7	M216-V
L20E-2M12	M312-III
L20E-2M10	M312-V
L20E-2M8	M312-VII
L20E-IX	M316-III
L20X	M316-V
M212-C	M16-4M5
	M16-4M8

**Note :** Position T08-T10 or T31-T34


## GSC-1507



ER11



1:1

RPM max.

5'000

### Machines Types

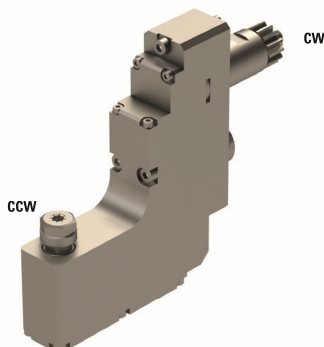
L20E2M8
L20E2M10
L20E-1M12
L20E-IX
L20X
L20XII

**Note :**

Position T31-34



## GSC-1407



ER11



1:1

RPM max.

5'000

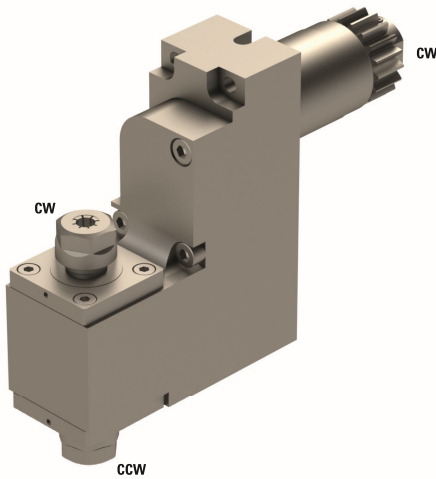
### Machines Types


L20X

**Note :**

 Position T31-34  
 Need 3 positions  
 Bloc U127B


**BSE307-3X**



 2xER11

 1:3

**RPM max.** 18'000

**Machines Types**

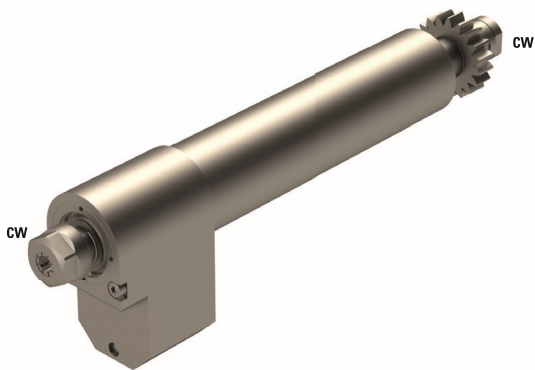
- L20E2M8
- L20E2M10
- L20E-1M12
- L20E-IX
- L20V
- L20VII
- L20VIII
- L20X
- M32-3M5
- M32-3M3
- M32-4M5
- M32-4M8


**Note :**

Position T06-T09



**GSC-310-3X**



 ER11

 1:3

**RPM max.** -

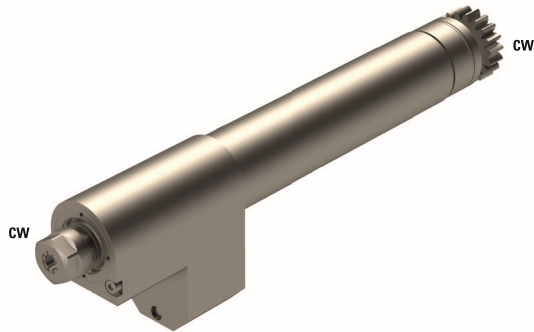
**Machines Types** L25



**Note :**

Position T08-T10



## GSC-510-L-3X

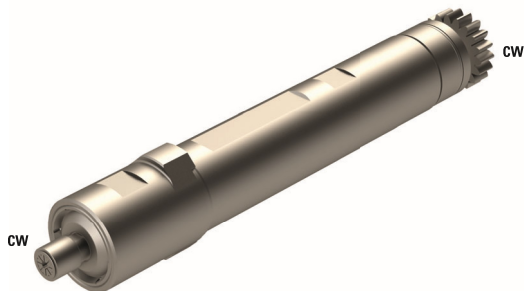




	ER11
	1:3
<b>RPM max.</b>	18'000
<b>Machines Types</b>	L20E2M8 M220-V
	L20E2M10 M232-III
	L20E-1M12 M232-V
	L20E-IX M320-III
	L20V M320-V
	L20VII M332-III
	L20VIII M332-V
	L20X M32-4M5
M220-III M32-4M8	

**Note :** Position T08-T10



## GSC-510-4X

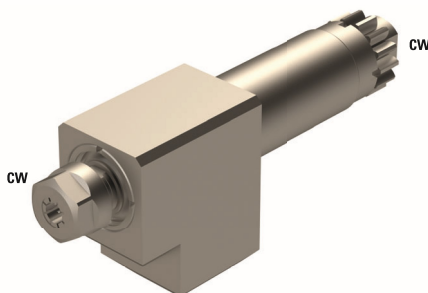




	ER08
	1:3.8
<b>RPM max.</b>	22'800
<b>Machines Types</b>	L20E2M8
	L20E-2M10
	L20E-1M12
	L20E-IX
	L20V
	L20VII
	L20VIII
	L20X
	M32-3M5
	M32-3M3
M32-4M5	
M32-4M8	

**Note :** Position T08-T10



## GSC-204-3X

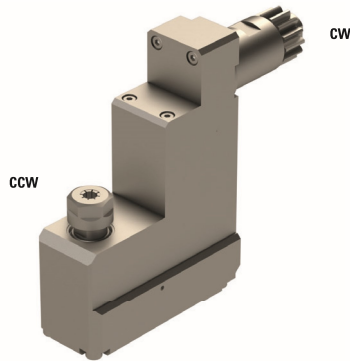




	ER11
	1:3
<b>RPM max.</b>	15'000
<b>Machines Types</b>	A20-3F7N M220-III
	A232-VII M220-V
	A32-VII M232-III
	A320-VII M232-V
	L20E-2M8 M320-III
	L20E-2M10 M320-V
	L20E-2M12 M332-III
	L32-1M8 M332-V
	L32-1M10 M32-4M5
	L32-1M12 M32-4M8

**Note :** Position T06-T10 according to the machine



## GSC-1507-3X

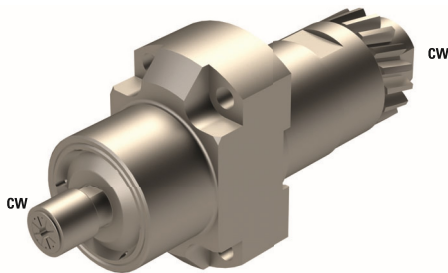




	ER11
	1:3
<b>RPM max.</b>	15'000
<b>Machines Types</b>	L20E2M8 L20E2M10 L20E-1M12 L20E-IX L20X L20XII

**Note :**  
Position T31-34



## GSC-1210-4X

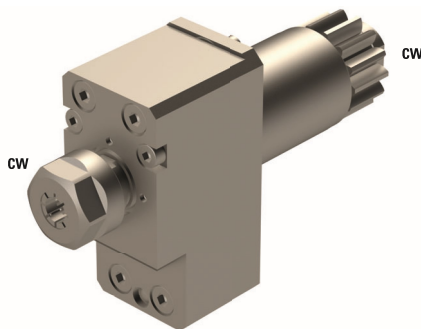




	ER08
	1:3.8
<b>RPM max.</b>	-
<b>Machines Types</b>	L20E2M8 L20E2M10 L20E-1M12 L20E-IX

**Note :** Position T08-T10



## MSC-507-2X



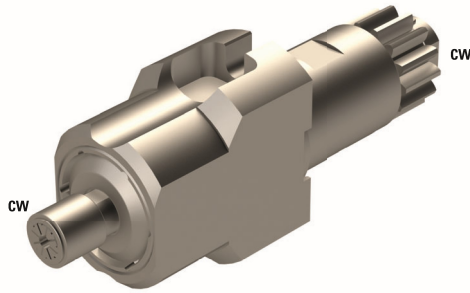
	ER11
	1:2
<b>RPM max.</b>	20'000
<b>Machines Types</b>	A20-VII A20-3F7N A320-VII L12-1M7 L20E-2M12 L20E-2M10 L20E-2M8 L20E-IX L20X L32-1M12 L32-1M10 L32-1M8 M220-III M220-V M232-III M232-V M320-III M320-V M332-III M332-V M32-4M5 M32-4M8 M212-C M212-V M216-C M216-V M312-III M312-V M312-VII M316-III M316-V M16-4M5 M16-4M8

**Note :** Position T06-T10 or T31-T34 or T21-T23 according to the machine



## MSC-507-4X

## Accelerated tools



ER08



1:3.8

RPM max.

38'000

### Machines Types

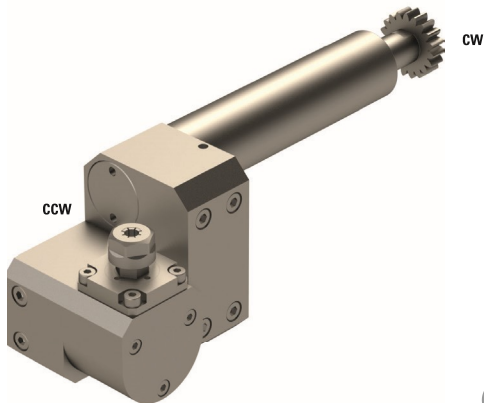
A20-VII	M320-V
A20-3F7N	M332-III
A320-VII	M332-V
L12-1M7	M32-4M5
L20E-2M12	M32-4M8
L20E-2M10	M212-C
L20E-2M8	M212-V
L20E-IX	M216-C
L20X	M216-V
L32-1M12	M312-III
L32-1M10	M312-V
L32-1M8	M312-VII
M220-III	M316-III
M220-V	M316-V
M232-III	M16-4M5
M232-V	M16-4M8
M320-III	



**Note :** Position T10-T06 or T31-T34 or T21-T23 according to the machine

## GSA-107

## Adjustable tools



ER11



1:1

RPM max.

6'000

### Machines Types

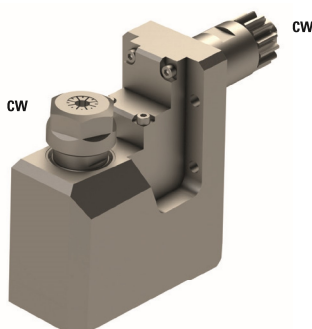
L20E2M8	M220-V
L20E2M10	M232-III
L20E-1M12	M232-V
L20E-IX	M320-III
L20V	M320-V
L20VII	M332-III
L20VIII	M332-V
L20X	M32-4M5
M220-III	M32-4M8



**Note :** Position T08-T10 / Need 2 tool positions / Adjustable 0°-180°

## GSA-1530

## Adjustable tools



ER16



1:1

RPM max.

-

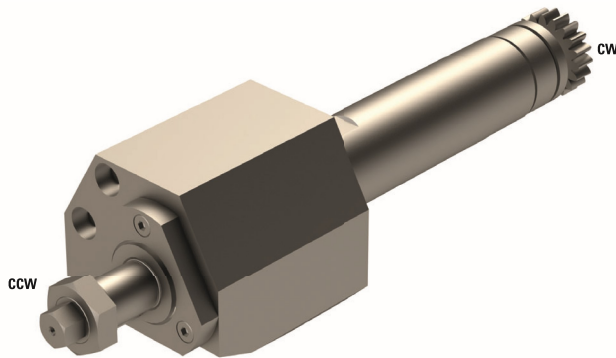
### Machines Types

L20E2M8
L20E2M10
L20E-1M12
L20E-IX



**Note :** Position T06-T09 / Fixe angle on 93°

## GSS-510



Ø 16

⚙️ 2:1

RPM max. 3'000

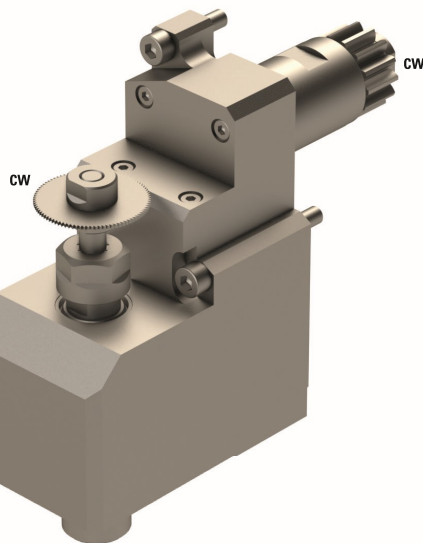
Machines Types		
	L20E2M8	M220-V
	L20E2M10	M232-III
	L20E-1M12	M232-V
	L20E-IX	M320-III
	L20V	M320-V
	L20VII	M332-III
	L20VIII	M332-V
	L20X	M32-4M5
	M220-III	M32-4M8

**Note :**

Position T08-T10  
 Need 2 tool positions



## GSS-1530



☰ ER11

⚙️ 5:3

RPM max. 5'400

Machines Types	
	A20-3F7N
	L12-1M7
	L20E-2M8
	L20E-2M10
	L20E-2M12
	L20E-IX
	L20X

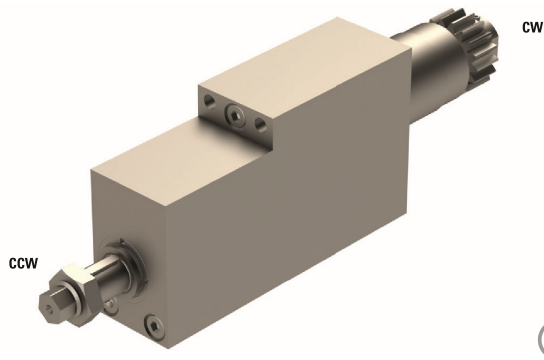
**Note :**

Position T34  
 Max. tool Ø63 mm  
 Max. cutter thickness 2 mm



**GSC-1335-DEC**

## Slitting saw tools



Ø	13
---	----

⚙️	1:1
----	-----

RPM max.	6'000
----------	-------

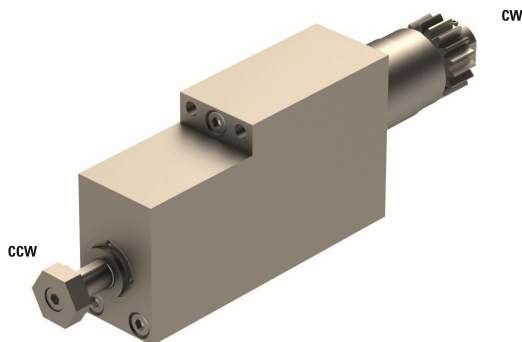
**Machines Types**

L20E-2M8  
L20E-2M10  
L20E-2M12  
L32-1M8  
L32-1M10  
L32-1M12

**Note :** Position T08-T10 / Max. tool Ø58 mm / Max. cutter thickness 15 mm

**GSS-1035-DEC**

## Slitting saw tools



Ø	10
---	----

⚙️	1:1
----	-----

RPM max.	6'000
----------	-------

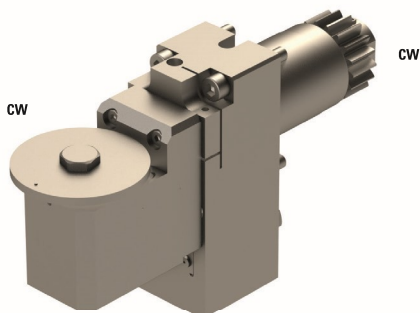
**Machines Types**

A232-VII  
A32-VII  
A320-VII  
L20E2M8  
L20E2M10  
L20E-1M12  
L20E-IX  
L20V  
L20VII  
L20VIII  
L20X  
L32-1M8  
L32-1M10  
L32-1M12

**Note :** Position T08-T10 / Max. tool Ø50mm / Max. thickness 15.5mm

**CITIZEN6-GSP-218**

## Polygon tools



Ø	8
---	---

⚙️	1:1
----	-----

RPM max.	6'000
----------	-------

**Machines Types**

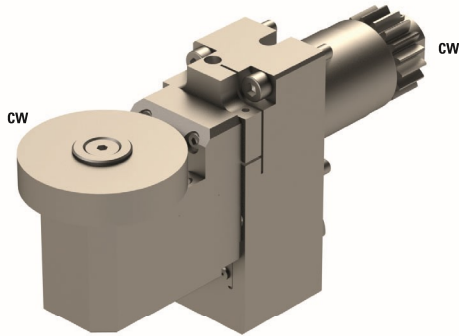
A232-VII  
A32-VII  
A320-VII  
L20E-2M8  
L20E-2M10  
L20E-2M12  
L20E-IX  
L32-1M8  
L32-1M10  
L32-1M12

**Note :** Position T08-T10 / Adjustable ±15° / Max. tool Ø45 mm

Max. thickness 5 mm / Basis CITIZEN6-PCR / Head GSP-218



## CITIZEN6-GSP-518



Ø 15.875

⚙️ 1:1

RPM max. 6'000

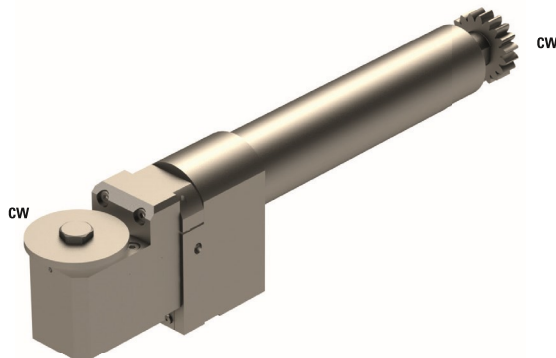
### Machines Types

A232-VII  
A32-VII  
A320-VII  
L20E-2M8  
L20E-2M10  
L20E-2M12  
L20E-IX  
L32-1M8  
L32-1M10  
L32-1M12

**Note :** Position T08-T10 / Adjustable ±15° / Max. tool Ø45 mm  
Max. thickness 10 mm / Basis CITIZEN6-PCR / Head GSP-518



## CITIZEN7-GSP-218



Ø 8

⚙️ 1:1

RPM max. 6'000

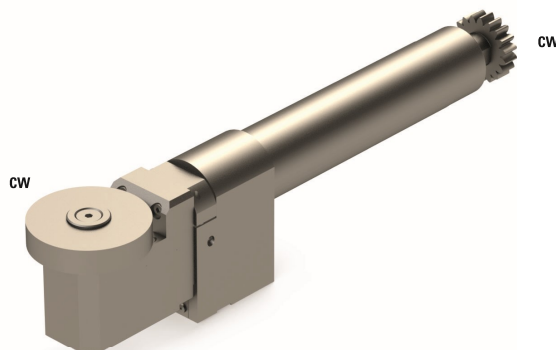
### Machines Types

L20V  
L20VII  
L20VIII  
L20X

**Note :** Position T08-T10 / Adjustable ±15° / Max. tool Ø45 mm  
Max. thickness 5 mm / Basis CITIZEN7-PCR / Head GSP-218



## CITIZEN7-GSP-518



Ø 15.875

⚙️ 1:1

RPM max. 6'000

### Machines Types

L20V  
L20VII  
L20VIII  
L20X

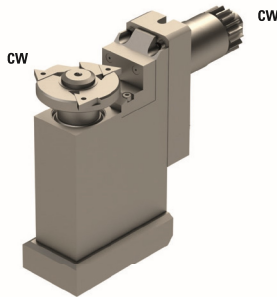
**Note :** Position T08-T10 / Adjustable ±15° / Max. tool Ø45 mm  
Max. thickness 10 mm / Basis CITIZEN7-PCR / Head GSP-518






## BSP-513

### Polygon tools



 Ø13

 1.5:1

**RPM max.** 8'000

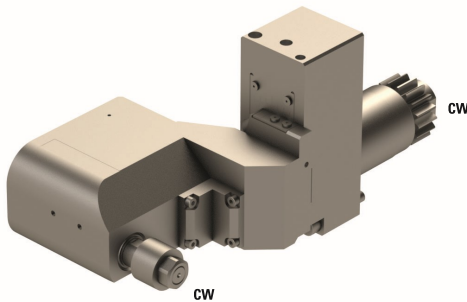
**Machines Types**  
 A20-VII  
 A20-3F7N  
 A32  
 L220  
 L32

**Note :** Position T09 / Max. tool Ø70 mm / Max. thickness 8.3 mm



## CITIZEN6-LSH-180

### Hobbing tools



**Ø** 8

 1:1

**RPM max.** 6'000

**Machines Types**  
 A232-VII  
 A32-VII  
 A320-VII  
 L20E-2M8  
 L20E-2M10  
 L20E-2M12  
 L20E-IX  
 L32-1M8  
 L32-1M10  
 L32-1M12

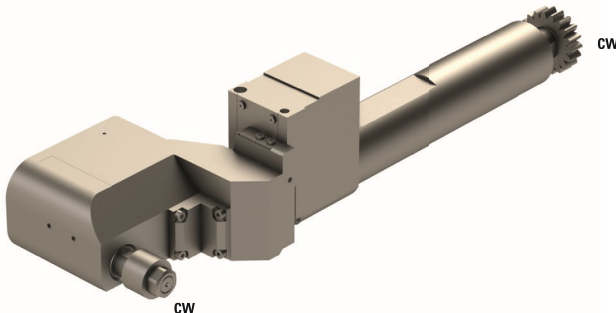
**Note :**

Position T08-T10  
 Adjustable -2° to +15° with max. tool Ø18 mm and max. thickness 12 mm  
 Adjustable -2° to +4° with max. tool Ø24 mm and max. thickness 12 mm  
 Basis CITIZEN6-PCR  
 Head LSH-180



## CITIZEN7-LSH-180

### Hobbing tools



**Ø** 8

 1:1

**RPM max.** 6'000

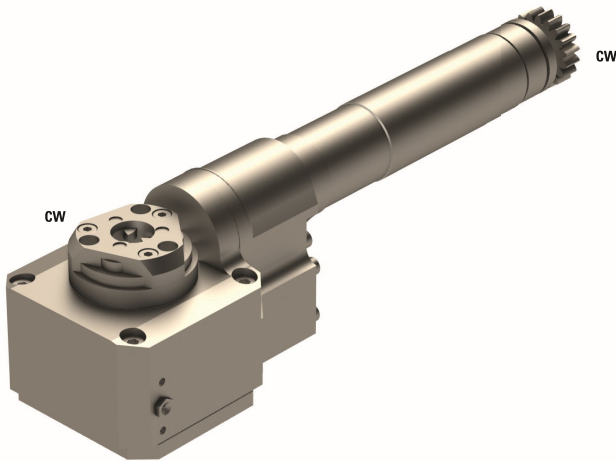
**Machines Types**  
 L20V  
 L20VII  
 L20VIII


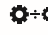
**Note :** L20X

Position T08-T10  
 Adjustable -2° to +15° with max. tool Ø18 mm and max. thickness 12 mm  
 Adjustable -2° to +4° with max. tool Ø24 mm and max. thickness 12 mm  
 Basis CITIZEN7-PCR  
 Head LSH-180



## LSW-101-L20



	-
	2:1
<b>RPM max.</b>	3'000

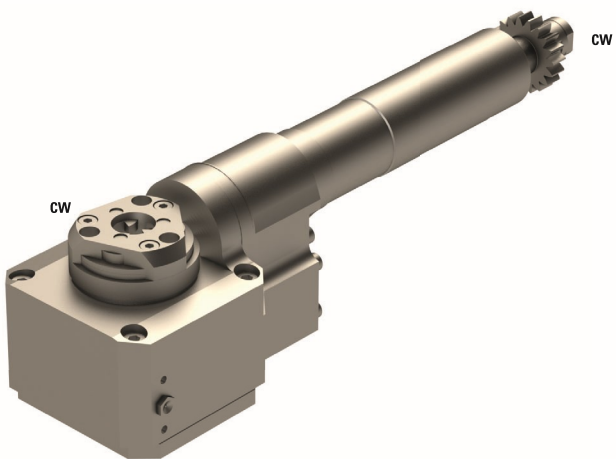
<b>Machines Types</b>	L20E2M8	L20VIII
	L20E2M10	L20X
	L20E-1M12	M32-3M5
	L20E-IX	M32-3M3
	L20V	M32-4M5
	L20VII	M32-4M8

**Note :**

Position T08-T10  
 Need 2 tool positions  
 Adjustable  $\pm 10^\circ$   
 SCHWANOG cutter head 857-207-01, Z=6,  $\varnothing 12$  mm  
 SCHWANOG cutter head SWG-192236, Z=6,  $\varnothing 12$  mm  
 GLOOR cutter head LSW-101-FPGLO, Z=3,  $\varnothing 6$  mm  
 GLOOR cutter head LSW-101-FPGLO-12, Z=3,  $\varnothing 12$  mm  
 GLOOR cutter head 01-0001, Z=6,  $\varnothing 11$  mm  
 UTILIS cutter head 137600, Z=9,  $\varnothing 12$  mm  
 UTILIS cutter head 137356, Z=12,  $\varnothing 12$  mm  
 HORN cutter head M302.C012.10.06, Z=6,  $\varnothing 12$  mm



## LSW-101-L25



	-
	2:1
<b>RPM max.</b>	3'000

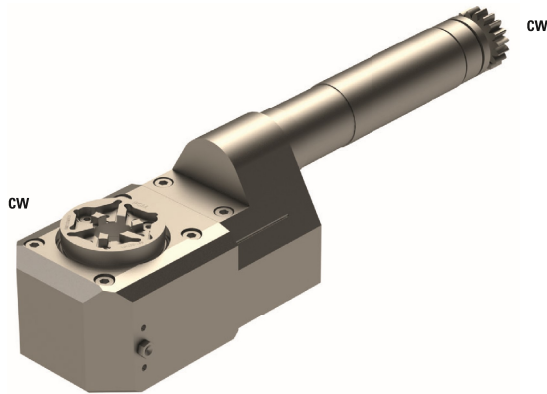
<b>Machines Types</b>	L20E2M8	L20VIII
	L20E2M10	L20X
	L20E-1M12	M32-3M5
	L20E-IX	M32-3M3
	L20V	M32-4M5
	L20VII	M32-4M8



**Note :**

Position T08-T10  
 Need 2 tool positions  
 Adjustable  $\pm 10^\circ$   
 SCHWANOG cutter head 857-207-01, Z=6,  $\varnothing 12$  mm  
 SCHWANOG cutter head SWG-192236, Z=6,  $\varnothing 12$  mm  
 GLOOR cutter head LSW-101-FPGLO, Z=3,  $\varnothing 6$  mm  
 GLOOR cutter head LSW-101-FPGLO-12, Z=3,  $\varnothing 12$  mm  
 GLOOR cutter head 01-0001, Z=6,  $\varnothing 11$  mm  
 UTILIS cutter head 137600, Z=9,  $\varnothing 12$  mm  
 UTILIS cutter head 137356, Z=12,  $\varnothing 12$  mm  
 HORN cutter head M302.C012.10.06, Z=6,  $\varnothing 12$  mm



## LSW-215



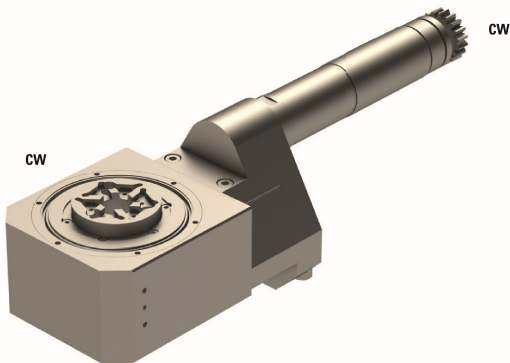
	-
	1:1
<b>RPM max.</b>	6'000
<b>Machines Types</b>	L20E2M8 L20VIII
	L20E2M10 L20X
	L20E-1M12 M32-3M5
	L20E-IX M32-3M3
	L20V M32-4M5
	L20VII M32-4M8


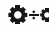
**Note :**

Position T08-T10  
 Need 2 tool positions  
 Adjustable  $\pm 15^\circ$   
 SCHWANOG cutter head 857-207-01, Z=6,  $\varnothing 12$  mm  
 SCHWANOG cutter head SWG-192236, Z=6,  $\varnothing 12$  mm  
 GLOOR cutter head LSW-101-FPGLO, Z=3,  $\varnothing 6$  mm  
 GLOOR cutter head LSW-101-FPGLO-12, Z=3,  $\varnothing 12$  mm  
 GLOOR cutter head 01-0001, Z=6,  $\varnothing 11$  mm  
 UTILIS cutter head 137600, Z=9,  $\varnothing 12$  mm  
 UTILIS cutter head 137356, Z=12,  $\varnothing 12$  mm  
 HORN cutter head M302.C012.10.06, Z=6,  $\varnothing 12$  mm



## LSW-225

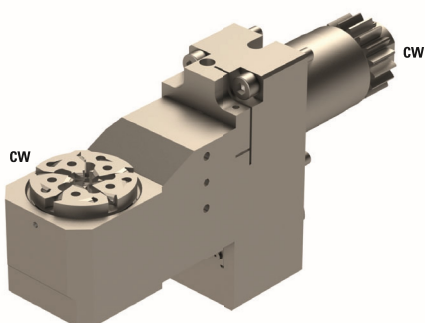


	-
	1:1
<b>RPM max.</b>	6'000
<b>Machines Types</b>	L20E2M8
	L20E2M10
	L20E-1M12
	L20E-IX
	L20V
	L20VII
	L20VIII
	L20X
	M32-3M5
	M32-3M3
M32-4M5	
M32-4M8	

**Note :** Position T08-T10 / Need 2 tool positions / Adjustable  $\pm 25^\circ$



## CITIZEN6-GSW-210



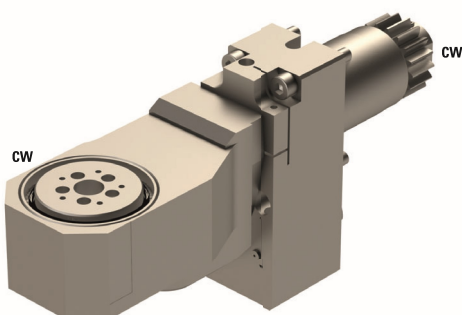
Ø	-
⚙️	1:1
RPM max.	6'000
<b>Machines Types</b>	A232-VII L20E-2M12
	A32-VII L20E-IX
	A320-VII L32-1M8
	L20E-2M8 L32-1M10
	L20E-2M10 L32-1M12

### Note :

Position T08-T10  
 Adjustable  $\pm 10^\circ$   
 PCM cutterhead Z=5,  $\varnothing 6$  mm  
 Base CITIZEN6-PCR  
 Head GSW-210  
 SCHWANOG cutter head GSW-210-FPSWG, Z=5,  $\varnothing 6$  mm  
 UTILIS cutter head GSW-210-FPUTI, Z=6,  $\varnothing 6$  mm



## CITIZEN6-GSW-220



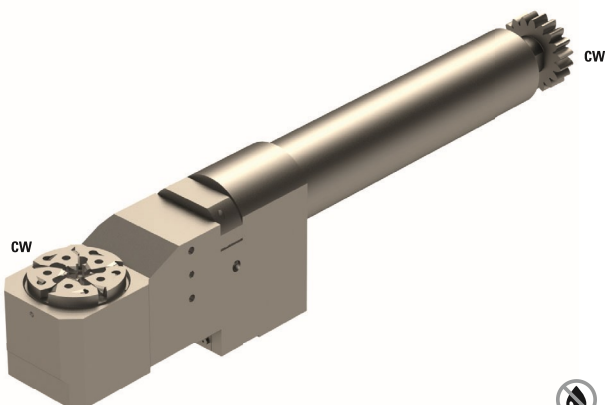
Ø	-
⚙️	1:1
RPM max.	6'000
<b>Machines Types</b>	A232-VII L20E-2M12
	A32-VII L20E-IX
	A320-VII L32-1M8
	L20E-2M8 L32-1M10
	L20E-2M10 L32-1M12

### Note :

Position T08-T10  
 Adjustable  $\pm 20^\circ$   
 PCM cutterhead Z=5,  $\varnothing 6$  mm  
 Base CITIZEN6-PCR  
 Head GSW-220  
 SCHWANOG cutter head GSW-220-FPSWG, Z=5,  $\varnothing 4$  mm  
 SCHWANOG cutter head GSW-220-FPSWG-II, Z=5,  $\varnothing 6$  mm  
 GLOOR cutter head GSW-210-FPGLO, Z=5,  $\varnothing 6$  mm



## CITIZEN7-GSW-210



Ø	-
⚙️	1:1
RPM max.	6'000
<b>Machines Types</b>	L20V
	L20VII
	L20VIII
	L20X

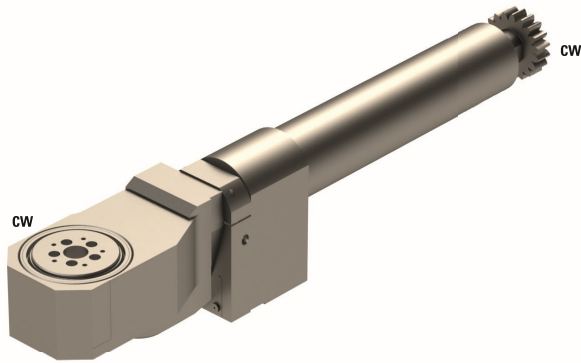
### Note :

Position T08-T10  
 Adjustable  $\pm 10^\circ$   
 PCM cutterhead, Z=5,  $\varnothing 6$  mm  
 Base CITIZEN7-PCR  
 Head GSW-210  
 SCHWANOG cutter head GSW-210-FPSWG, Z=5,  $\varnothing 6$  mm  
 UTILIS cutter head GSW-210-FPUTI, Z=6,  $\varnothing 6$  mm



## CITIZEN7-GSW-220

## Whirling tools



Ø	-
---	---

⚙️+⚙️	1:1
-------	-----

RPM max.	6'000
----------	-------

**Machines Types**

L20V  
L20VII  
L20VIII  
L20X

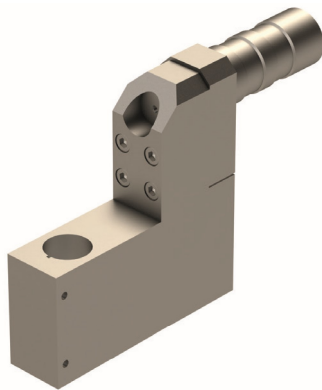
**Note :**

Position T08-T10  
Adjustable  $\pm 20^\circ$   
PCM cutterhead, Z=5,  $\varnothing 6$  mm  
Base CITIZEN7-PCR  
Head GSW-220  
SCHWANOG cutter head GSW-220-FPSWG, Z=5,  $\varnothing 4$  mm  
SCHWANOG cutter head GSW-220-FPSWG-II, Z=5,  $\varnothing 6$  mm  
GLOOR cutter head GSW-210-FPGLO, Z=5,  $\varnothing 6$  mm



## 852-354-OF010

## Special tools



Ø	25
---	----

⚙️+⚙️	-
-------	---

RPM max.	-
----------	---

**Machines Types**

L20E2M8  
L20E2M10  
L20E-1M12  
L20E-IX  
L20V  
L20VII  
L20VIII  
L20X  
M32-3M5  
M32-3M3

**Note :**

Position T08-T10  
For high frequency spindle Meyrat



### GDF903



Ø 25,4

⚙️ -

RPM max. -

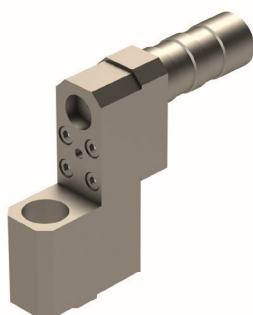
Machines Types		
	L20E2M8	M220-III
	L20E2M10	M220-V
	L20E-1M12	M232-III
	L20E-IX	M232-V
	L20V	M320-III
	L20VII	M320-V
	L20VIII	M332-III
	L20X	M332-V

Note :



Position T08-T10 and T06-T09 according to the machine

### GDF-903-25



Ø 25,00

⚙️ -

RPM max. -

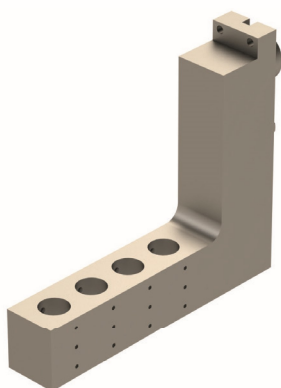
Machines Types		
	L20E2M8	M220-III
	L20E2M10	M220-V
	L20E-1M12	M232-III
	L20E-IX	M232-V
	L20V	M320-III
	L20VII	M320-V
	L20VIII	M332-III
	L20X	M332-V

Note :



Position T06-T09

### GDF-1207-L



Ø 4x19.05

⚙️ -

RPM max. -

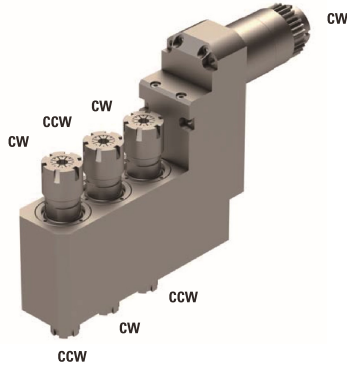
Machines Types		
	A20-3F7N	
	L20E-2M10	
	L20E-2M12	
	L20E-2M8	
	L32-1M10	
	L32-1M12	
	L32-1M8	

Note :



Position T09

### SR20J-GSE-3710



	3xER16+3xER11
---	---------------

	1:1
---	-----

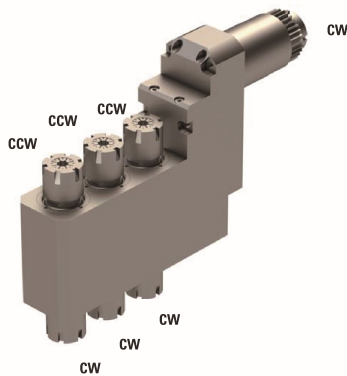
<b>RPM max.</b>	8'000
-----------------	-------

**Machines Types**

SB-12  
 SB-20R  
 SR-20J  
 SR-20JN  
 SR-20RIII  
 SR-20RII  
 SR-20RIV

**Note :**


### SR20J-GSE-2310



	3xER16+3xER16
---	---------------

	1:1
---	-----

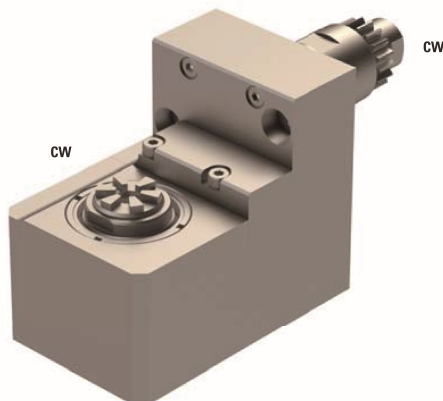
<b>RPM max.</b>	8'000
-----------------	-------

**Machines Types**

SB-12  
 SB-20R  
 SR-20J  
 SR-20JN  
 SR-20RIII  
 SR-20RII  
 SR-20RIV

**Note :**


### SR20J-RSC-007



	ER11
---	------

	1:1
---	-----

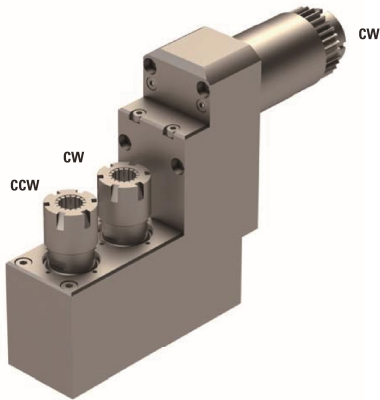
<b>RPM max.</b>	8'000
-----------------	-------



**Machines Types**

ECAS-12  
 ECAS-20  
 SB-12  
 SB-20R  
 SR-10J  
 SR-20J  
 SR-20JN  
 SR-20RIII  
 SR-20RII  
 SR-20RIV  
 SR-32J  
 SR-32JN  
 SV-20R  
 SW-12RII

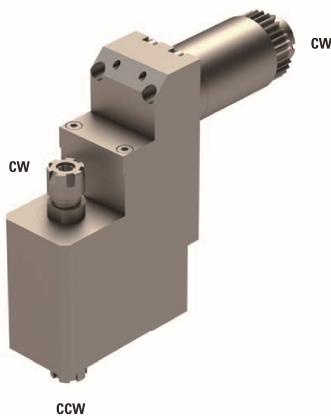
**Note :**




## E20-GSE-210



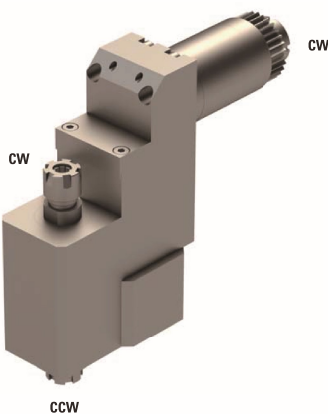
	2xER16
	1:1
<b>RPM max.</b>	8'000
<b>Machines Types</b>	ECAS-12 ECAS-20 SR-20J SR-20JN SR-20RIII SR-20RII SR-20RIV SW-20
<b>Note :</b>	



## E20-DE-1111



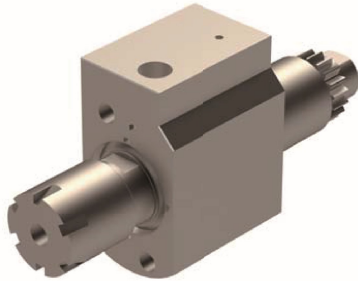
	2xER11
	1:1
<b>RPM max.</b>	6'000
<b>Machines Types</b>	ECAS-12 ECAS-20 SR-20J SR-20JN SR-20RIII SR-20RII SR-20RIV SW-20 SB-12 SB-20R
<b>Note :</b>	



## E20-DS-2222



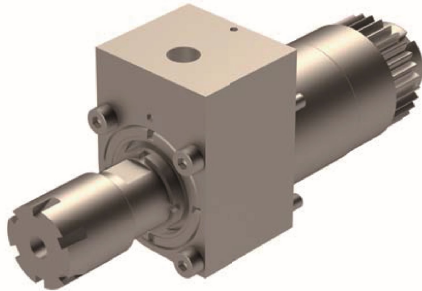
	2xER11
	1:2
<b>RPM max.</b>	5'000
<b>Machines Types</b>	ECAS-12 ECAS-20 SR-20J SR-20JN SR-20RIII SR-20RII SR-20RIV SW-20 SB-12 SB-20R
<b>Note :</b>	





**SR20J-GSE-010-HP**


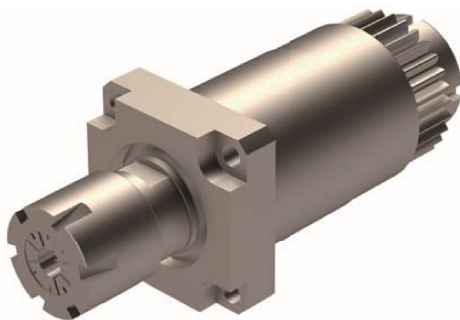
	ER11
	1:1
<b>RPM max.</b>	8'000
<b>Machines Types</b>	SR-20J
<b>Note :</b>	



Maximum 150 bar  
 Psotion T2100/T2200/T2300/T2400


**SR20J-GSC-010-HP**


	ER11
	1:1
<b>RPM max.</b>	8'000
<b>Machines Types</b>	SR-20J
<b>Note :</b>	

Maximum 150 bar  
 Position T3400/T3500

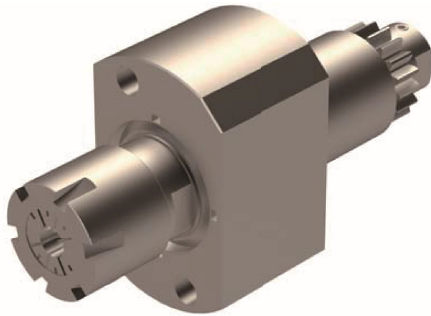

**E20-GSC-110**




	ER16
	1:1
<b>RPM max.</b>	8'000
<b>Machines Types</b>	ECAS-12 ECAS-20 SR-20J SR-20JN SR-20RIII SR-20RII SR-20RIV SR-32J SR-32JN SV-12 SV-20 SV-32 SV-32JII SW-20
<b>Note :</b>	STAR N° 331-50-00



**E20-GSE-110**

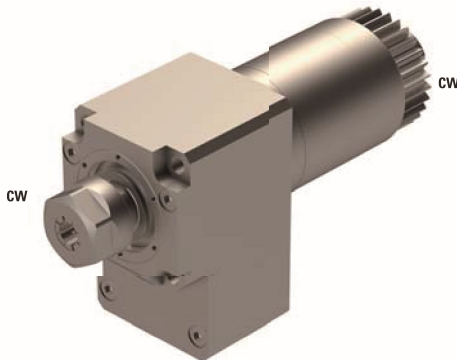
## Cross drill/mill tools





	ER16
	1:1
<b>RPM max.</b>	8'000
<b>Machines Types</b>	ECAS-12 ECAS-20 SB-12 SB-20B SR10J SR-20J SR-20JN SR-20RIII SR-20RII SR-20RIV SR-32J SR-32JN SW-12RII

**E20-GSC-3X**

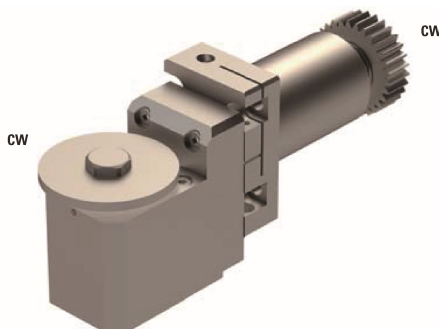
## Accelerated tools





	ER11
	1:2.59
<b>RPM max.</b>	14'892.5
<b>Machines Types</b>	ECAS-20T SR-20J SR-20RII SR-20RIV SR-20RIII SV-12 SV-20 SV-32 SV-32J SV-32JN

**STAR3-GSP-218**

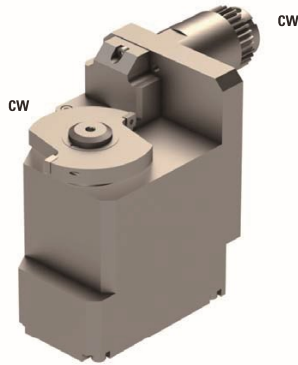
## Polygon tools



	8
	1:1
<b>RPM max.</b>	8'000
<b>Machines Types</b>	SW12-RII
<b>Note :</b>	Adjustable $\pm 10^\circ$ Position T3300

## SR20RII-GSP-713

## Polygon tools



	13
---	----

	1:1
---	-----

RPM max.	3'000
----------	-------

Machines Types	SR20RII
----------------	---------

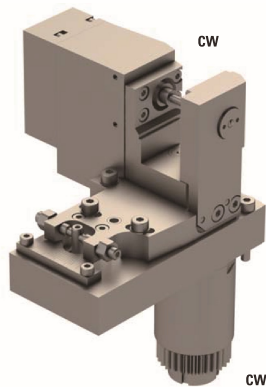
**Note :**

Position T3400-T3500  
 Max. tool Ø60 mm  
 Max. thickness 8.3 mm



## E20-RSH-035

## Hobbing tools



	3.5
---	-----

	1:1
---	-----

RPM max.	5'000
----------	-------

**Machines Types**

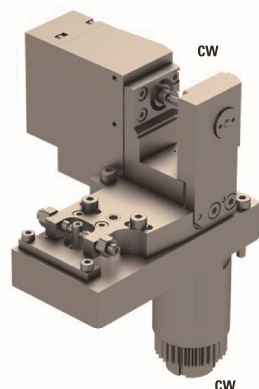
ECAS-12  
 ECAS-20  
 SR-20J  
 SR-20JN  
 SR-20RIII  
 SR-20RII  
 SR-32J  
 SR-32JN


**Note :** Adjustable  $\pm 5^\circ$



## E20-RSH-080

## Hobbing tools



	8
---	---

	1:1
---	-----

RPM max.	5'000
----------	-------

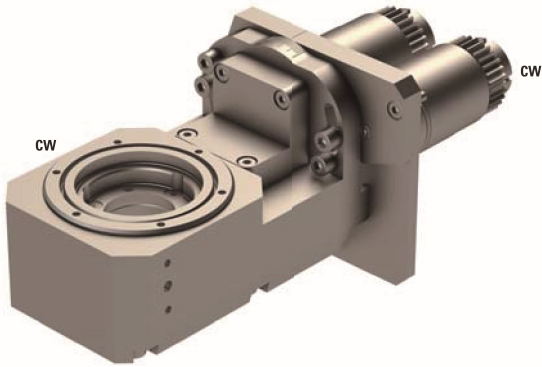
**Machines Types**

ECAS-12  
 ECAS-20  
 SR-20J  
 SR-20JN  
 SR-20RIII  
 SR-20RII  
 SR-32J  
 SR-32JN

**Note :** Adjustable  $\pm 5^\circ$



## SR20J-W20



 -

 1:1

**RPM max.** 8'000

**Machines Types**

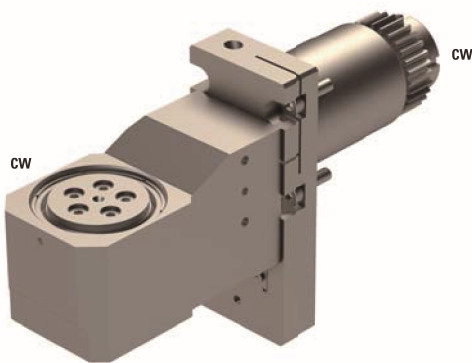
- ECAS-12
- ECAS-20
- SR-20J
- SR-20JN
- SR-20RIII
- SR-20RII
- SR-32J
- SR-32JN
- SW-20

**Note :**

Use 2 Locations  
 Adjustable  $\pm 20^\circ$   
 SCHWANOG 191884, Z=6,  $\varnothing 12\text{mm}$



## STAR2-GSW-210



 -

 1:1

**RPM max.** 8'000

**Machines Types**

- SR20J
- SB-16R

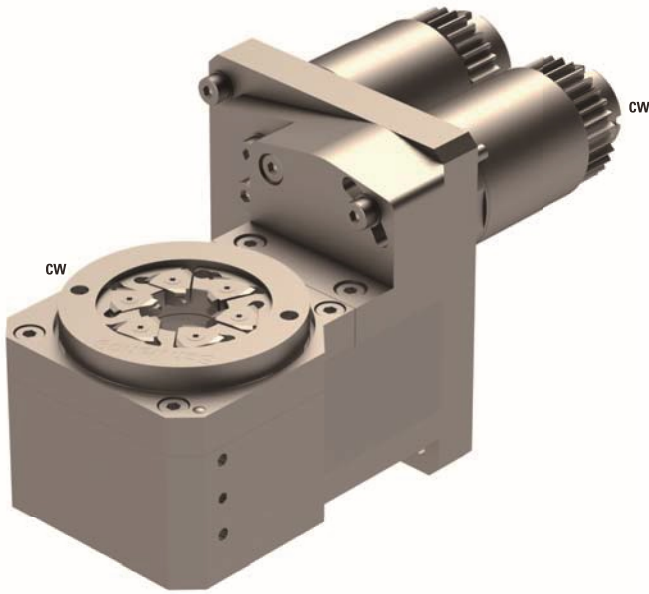
**Note :**

Position T3400 and T3500  
 Adjustable  $\pm 10^\circ$   
 GSW-210-FPSWG, Z=5,  $\varnothing 6\text{mm}$



## E20-W20

### Whirling tools



	-
---	---

	1:1
---	-----

<b>RPM max.</b>	8'000
-----------------	-------

#### Machines Types

ECAS-12  
 ECAS-20  
 SR-20J  
 SR-20JN  
 SR-20RIII  
 SR-20RII  
 SR-32J  
 SR-32JN  
 SW-20

#### Note :

Adjustable  $\pm 20^\circ$   
 Need 2 positions  
 SCHWANOG 218135, Z=5,  $\varnothing 6\text{mm}$   
 GLOOR 501-0003, Z=5,  $\varnothing 6\text{mm}$



## E20C-901-AR

### Special tools



$\varnothing$	3x32
---------------	------

	-
---	---

<b>RPM max.</b>	-
-----------------	---

#### Machines Types

ECAS-12  
 ECAS-20  
 SR-20J  
 SR-20JN  
 SR-20RIII  
 SR-20RII  
 SR-20RIV  
 SW-20

#### Note :

