

고압 절삭유 로터리 피팅기(특허출원)

Rotary-Feeding device for high-pressur cutting oil

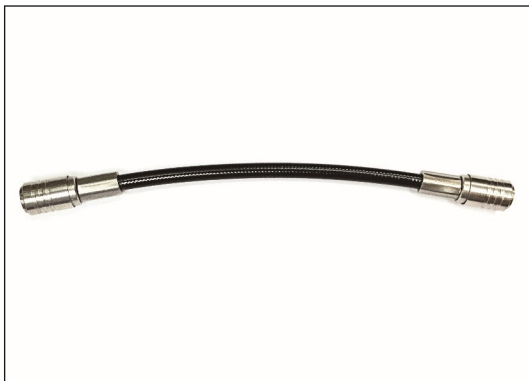


(주)진성유로텍
www.bestjinsung.com



- 고압 절삭유의 인서트 날끝 분사 시스템에 의한 TOOL LIFE 개선.
- 원활한 칩처리에 의한 효율적인 양산성.

H. 카플링호스



100mm ~ 600mm

* 고객 요구에 의한 맞춤 제작 가능

Angle Adaptor



회전 가능

M5 X 0.8P

M6 X 1.0P

M8 X 1.0P

PT 1/8

Straight Adaptor



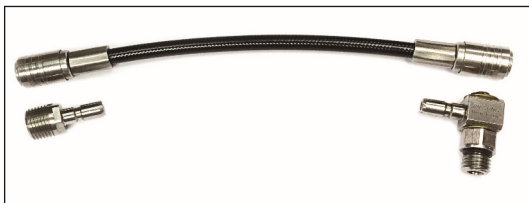
M5 X 0.8P

M6 X 1.0P

M8 X 1.0P

PT 1/8

H. 카플링 호스 SET



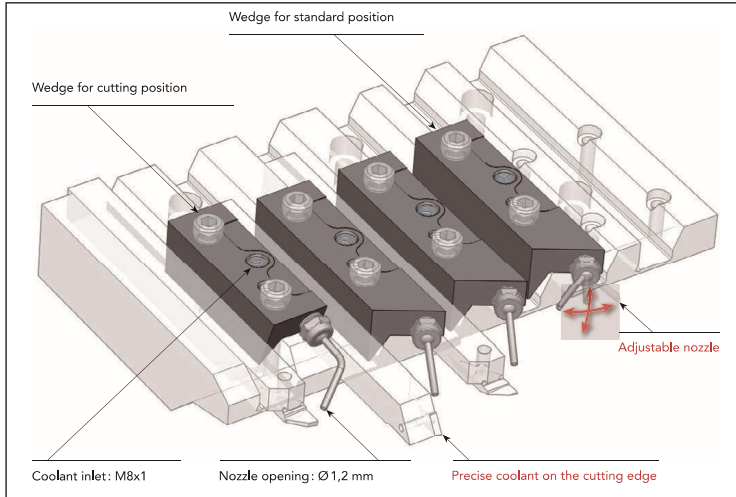
- 양방향 카플링 원터치 방식에 의한 원활한 체결 및 분리.
- 간편한 체결, 분리에 의한 생산성 향상.
- Angle adaptor 좌,우 회전이 가능해 매니폴드 위치에 따라 호스 방향 전환이 간편.
- 30~200 bar까지 적용 가능.

* 상기 사이즈 외의 호스 및 adaptor는 협의 후 제작 가능.

내경 절삭유 홀더 시스템

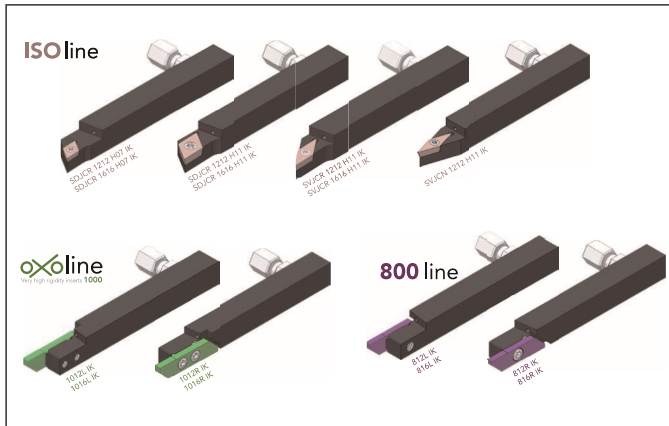
Tool-holders with internal coolant

Nozzy system for **star** Citizen



- 스타 및 신콤 전용
- 홀더 플레이트에서 고압 절삭유 분사 방식.
- 모든 Tool maker의 홀더 및 인서트 장착 가능.
- 절삭유 배출 각도 조절 가능.

Tool-holder system (made BIMU)



Tool-holder system (made JINSUNG)



ARNO Parting system (with coolant)

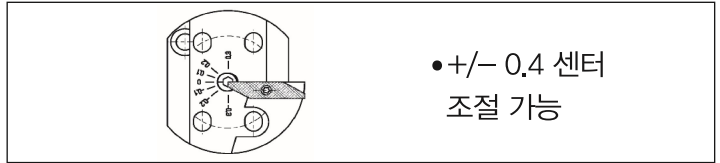


Sub-Holder system

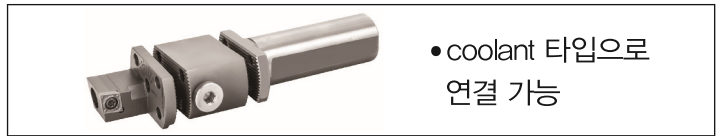


Multitube of different types

* 하나의 상크에 head 변경 타입으로 원하는 홀더로 손쉽게 교체 가능

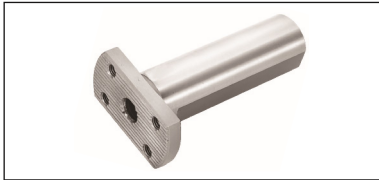


• +/- 0.4 센터
조절 가능

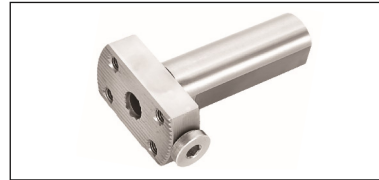


• coolant 타입으로
연결 가능

Standard shank

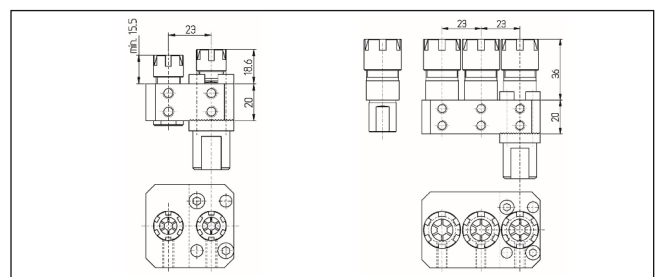
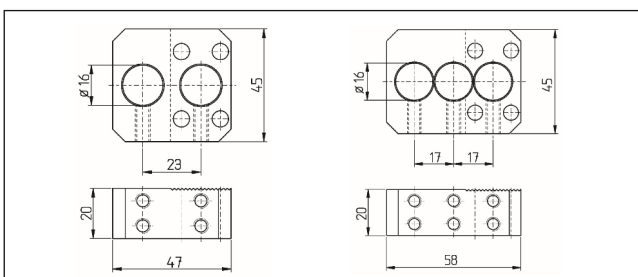


Coolant shank



Spacer plates	Bimu 040 type	Threading insert 16ER
SCLC TYPE	SDNC , SDJC TYPE	SVJC , SVJP , SVNC TYPE
SVVC , SVUC , SVQC TYPE	Tool holder 10X10 , 12X12	ER11 / ER 16 , Ifanger Boring

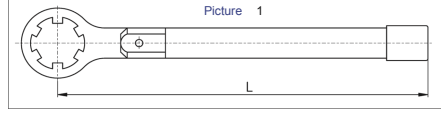
배면 공구대 부족시 2구, 3구 확장 (ER11, ER16)



ER Type 토크 스패너



- 안착성이 우수하여 미끌림 및 부상 방지.
- TORQUE가 정해져 있어 항상 일정한 압력으로 체결 가능.



Order-no.	Nut	Picture	For tool ø in mm	Torque (Nm)	Complete length	Order-no.	Nut	Picture	For tool ø in mm	Torque (Nm)	Complete length
RFSE08NMM	ER08M	1	1,0 - 5,0	8	120	RFSE11NMUM	UM/ER11	2	3,0 - 7,0	18	330
RFSE11NMMS	ER11M	1	1,0 - 2,9	9	120	RFSE16NMUM	UM/ER16	2	4,0 - 10,0	35 / 55	330
RFSE11NMM	ER11M	1	3,0 - 7,0	18	120	RFSE16NMUX	UX/ER16	3	4,0 - 10,0	35 / 55	330
RFSE16NMMS	ER16M	1	1,5 - 3,5	20	120	RFSE20NMUM	UM/ER20	2	1,5 - 13,0	40 / 70	330
RFSE16NMM	ER16M	1	4,0 - 10,0	28	120	RFSE20NMUX	UX/ER20	3	1,5 - 13,0	40 / 70	330
RFSE20NMM	ER20M	1	1,5 - 13,0	35	130	RFSE25NMUM	UM/ER25	3	4,0 - 17,0	55 / 90	390
RFSE25NMM	ER25M	1	4,0 - 17,0	40	130	RFSE32NMUM	UM/ER32	3	3,0 - 22,0	70 / 130	395

Collet Reduction Sleeves with Cap Nut UF · 드릴류의 길이가 한정적일 때 슬리브 확장 가능.

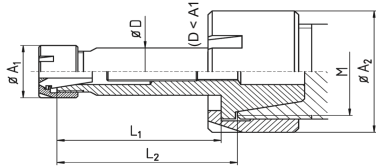
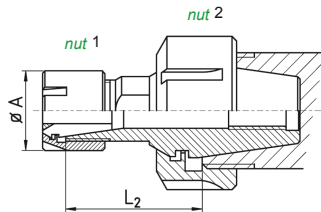
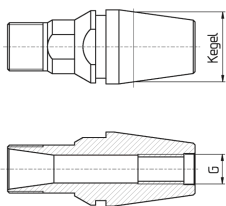


Bild 2

order-no.	cone	collet	cap nut, thread M	A ₁	A ₂	L ₁	L ₂	L	G
EQ11M/ER08	ER11	ER08	M13 x 0,75	12	19	8		28	M4
EQ11/ER08	ER11	ER08	M14 x 0,75	12	20	8		28	M4
EQ11M/ER16M	ER11	ER16 #	M13 x 0,75	22	19	27		47	-
EQ11/ER16M	ER11	ER16 #	M14 x 0,75	22	20	27		47	-
EQ11M/ER16	ER11	ER16 #	M13 x 0,75						
EQ11/ER16	ER11	ER16 #	M14 x 0,75	22	20	38	41	56	-
EQ16M/F8L	ER16	F8	M19 x 1	20	SW22	50,5	53,5	70	M8
EQ16/F8L	ER16	F8	M22 x 1,5 *	20	28	50,5	53,5	70	M8
EQ16M/F8	ER16	F8	M19 x 1	20	SW22	31	34	53	M8
EQ16/F8	ER16	F8	M22 x 1,5 *	20	28	31	34	53	M8
EQ16M/ER08M	ER16	ER08	M19 x 1	12	SW22	27	30	48	M8
EQ16/ER08M	ER16	ER08	M22 x 1,5	12	28	27	30	48	M8
EQ16M/ER08ML	ER16	ER08	M19 x 1	12	SW22	44	47	66	M8
EQ16/ER08ML	ER16	ER08	M22 x 1,5	12	28	44	47	66	M8
EQ16M/ER08M-HS207**	ER16	ER08	M19 x 1	12	SW22				M8
EQ16/ER08M-HS207**	ER16	ER08	M22 x 1,5	12	28				M8
EQ16M/ER11M	ER16	ER11	M19 x 1	16	SW22	16	19	38	M8
EQ16/ER11M	ER16	ER11	M22 x 1,5 *	16	28	16	19	38	M8
EQ16M/ER11ML	ER16	ER11	M19 x 1	16	SW22	32	35	53	M8
EQ16/ER11ML	ER16	ER11	M22 x 1,5 *	16	28	32	35	53	M8
EQ16M/ER11MXL	ER16	ER11	M19 x 1	16	SW22	53	56	75	M8
EQ16/ER11MXL	ER16	ER11	M22 x 1,5 *	16	28	53	56	75	M8

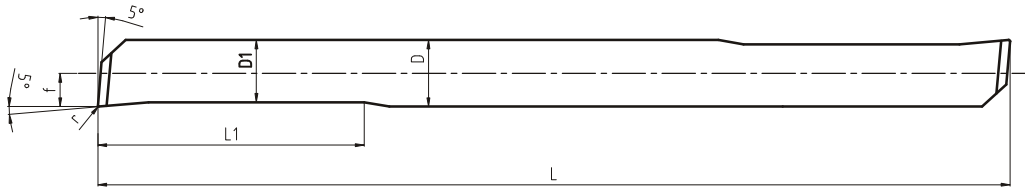
Collet Reduction Sleeves with Standard Nut



EQS16M/ER11M	ER16	ER11	ER11M	ER16M	16	30	M8x1	22
EQS16/ER11M	ER16	ER11	ER11M	UM/ER16	16	28	M8x1	25

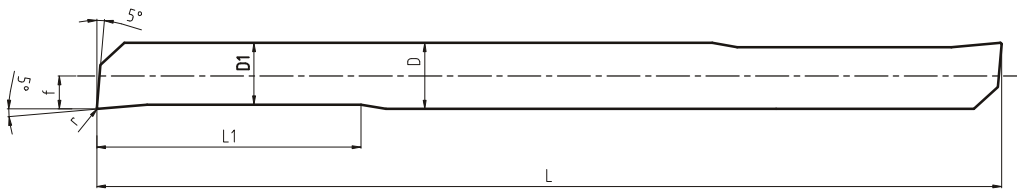
J.S 2코너 BORING LINE

JSEC (BORING) 칩브레이커 있음



ITEM	Ø최소가공경	f	r	D1	L1	D	L
206005	2.2	0.95	0.05	1.47	6	3.0	45
313005	3.2	1.45	0.05	2.28	13	3.0	50
41501	4.2	1.95	0.1	3.3	15	4.0	60
52002	5.2	2.45	0.2	4.2	20	5.0	70
52502	5.2	2.45	0.2	4.2	25	5.0	70
62502	6.2	2.95	0.2	5.1	25	6.0	75
63002	6.2	2.95	0.2	5.1	30	6.0	75

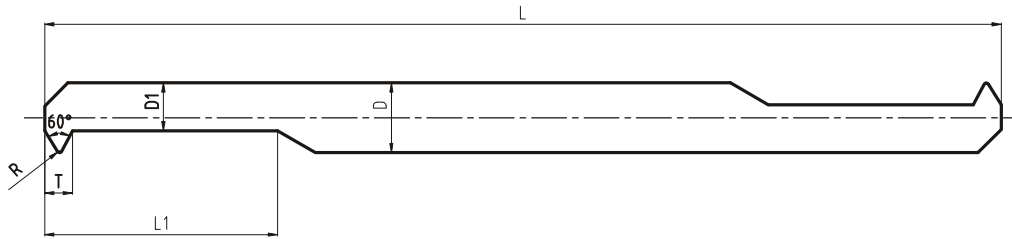
JSEN (BORING) 칩브레이커 없음



ITEM	Ø최소가공경	f	r	D1	L1	D	L
31305	3.2	1.45	0.05	2.28	13	3.0	50
41501	4.2	1.95	0.1	3.3	15	4.0	60
52002	5.2	2.45	0.2	4.2	20	5.0	70
62502	6.2	2.95	0.2	5.1	25	6.0	75

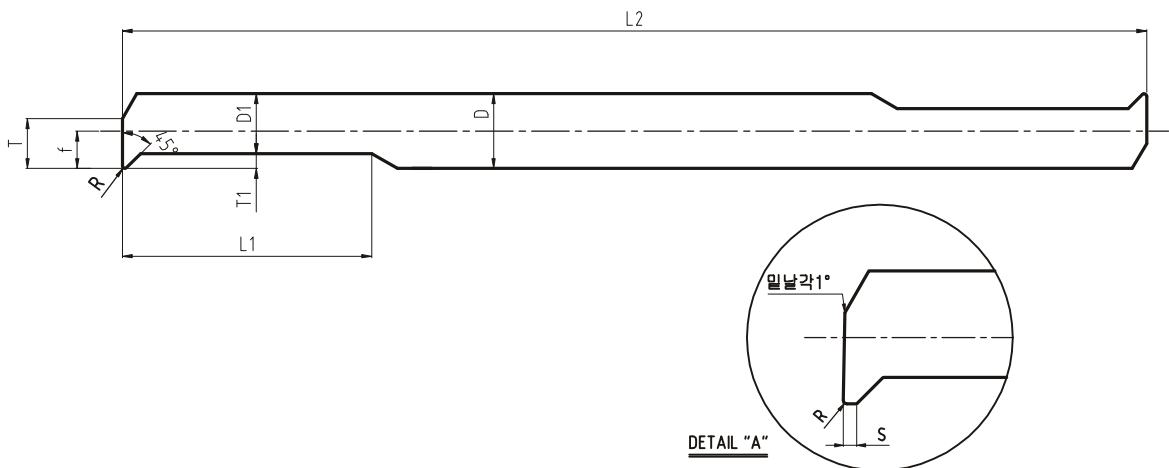
J.S 2코너 BORING LINE

JSGE(60°), JSGW(55°) (THREADING) 타입 보링바



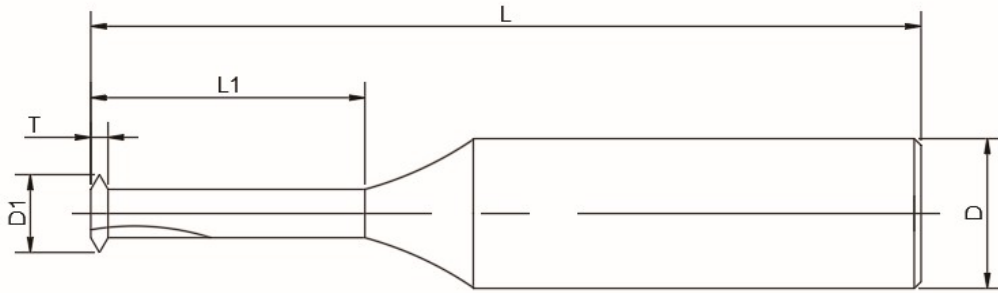
ITEM	PITCH	T	R	D1	D	L1	L
310005	0.5~1.0	1.32	0.05	1.8	3.0	10	50
413005	0.75~1.25	1.55	0.05	2.6	4.0	13	60
51701	0.8~1.5	1.84	0.1	3.4	5.0	17	70
62001	1.0~2.0	2.42	0.1	3.9	6.0	20	75

JSKO (COPYING) 타입 보링바



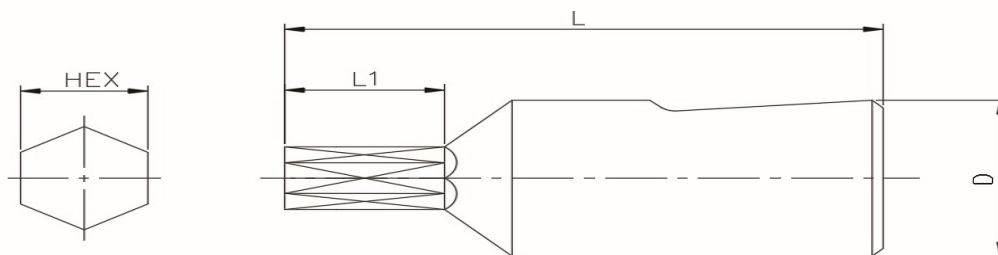
ITEM	T	T1	f	R	S(직각)	D1	L1	D	L2
31301	2.3	1.0	1.4	0.1	0.2	1.9	13	3.0	50
41501	3.1	1.3	1.9	0.1	0.2	2.6	15	4.0	60
52002	4.1	1.5	2.4	0.2	0.3	3.4	20	5.0	70
62502	4.8	1.8	2.9	0.2	0.3	4.1	25	6.0	75

J.S THREAD MILL



M	P	D1(Ø)	T	L1	D2(Ø)	D(Ø)	L	Z	DRILLING(Ø)
1.2	0.25	0.93	0.22	3	0.55	3	40	4	0.95~1.0
1.4	0.3	1.05	0.27	5.5	0.6	3	40	4	1.1~1.15
1.6	0.35	1.25	0.35	7.5	0.7	3	40	4	1.25~1.3
1.8	0.35	1.44	0.37	7	0.8	3	40	4	1.45~1.5
2.0	0.4	1.54	0.34	7	0.98	3	40	4	1.6~1.65
2.5	0.45	1.96	0.37	8	1.36	3	40	4	2.05~2.1
3.0	0.5	2.44	0.43	10	1.65	3	40	4	2.5
4.0	0.7	3.2	0.57	17	2.22	5	53	4	3.3
5.0	0.8	4.08	0.65	10	2.96	5	53	4	4.2
6.0	1.0	4.9	0.81	17	3.5	5	53	4	5.0

J.S 로터리 육각펀치



육각(mm)	HEX	L1	L	D
2.5	2.53	3.0	28.2	8
3.0	3.04	4.0	28.2	8
4.0	4.05	5.0	28.2	8
5.0	5.06	6.0	28.2	8
6.0	6.06	7.0	28.2	8

J.S END MILL



D (Ø)	d (Ø)	L2 (mm)	Z	코팅	비코팅
1	3	3	2Z / 3Z / 4Z	●	○
2	3	4	2Z / 3Z / 4Z	●	○
3	3	5	2Z / 3Z / 4Z	●	○
4	4	7	2Z / 3Z / 4Z	●	○
5	5	7	2Z / 3Z / 4Z	●	○
6	6	10	2Z / 3Z / 4Z	●	○
7	7	14	2Z / 3Z / 4Z	●	○
8	8	12	2Z / 3Z / 4Z	●	○
9	7	7	2Z / 4Z	○	●
10	7	10	2Z / 4Z	●	○
10	10	15	2Z / 3Z / 4Z	●	○
12	10	10	2Z / 4Z	●	○
14	10	10	2Z / 4Z	●	●
15	10	12	2Z / 4Z	●	○
16	10	15	2Z / 4Z	●	○

● 재고보유 ○ 주문생산



KINGSTOOL



1. BM 012LX-7



2. 비무 배면 나사 홀더



3. 3코너 나사 홀더 (전면, 배면)



4. Y축 홀더



5. 쉬프팅 홀더



6. SVVC, SVNC



7. 스타 전용 배면홀더



8. 스타 전용 보링슬리브



9. 스타 링



10. 드릴 홀더



11. 보링 슬리브



12. 초경 보링 홀더



13. 너링 홀더



14. 커터 홀더



15. ER(M)너트 토크 스패너 및 익스텐션



16. 배면, 내경 너링 홀더



17. 12 x 16 어댑터



18. 오무림 홀더



19. 탭 전용홀더



20. 국산 ER콜렛

진성개발품 및 약세사리